

# MONTHLY MEMBERSHIP PROGRESS REPORT

District 27 A2

Results as of: 3/31/2024

GMT:

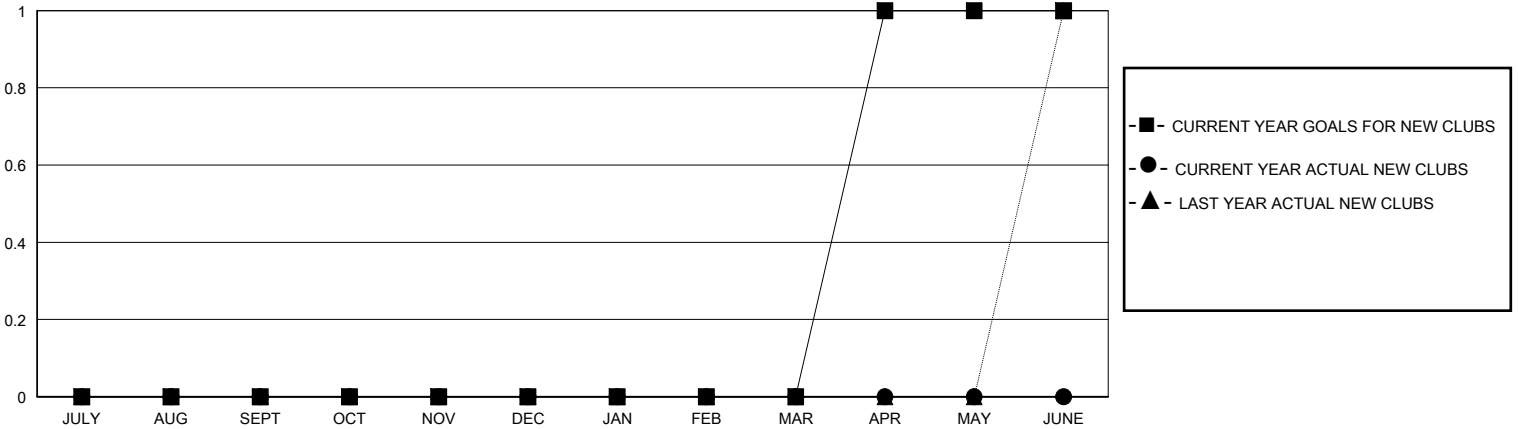
LOCATION WISCONSIN

GMT CA

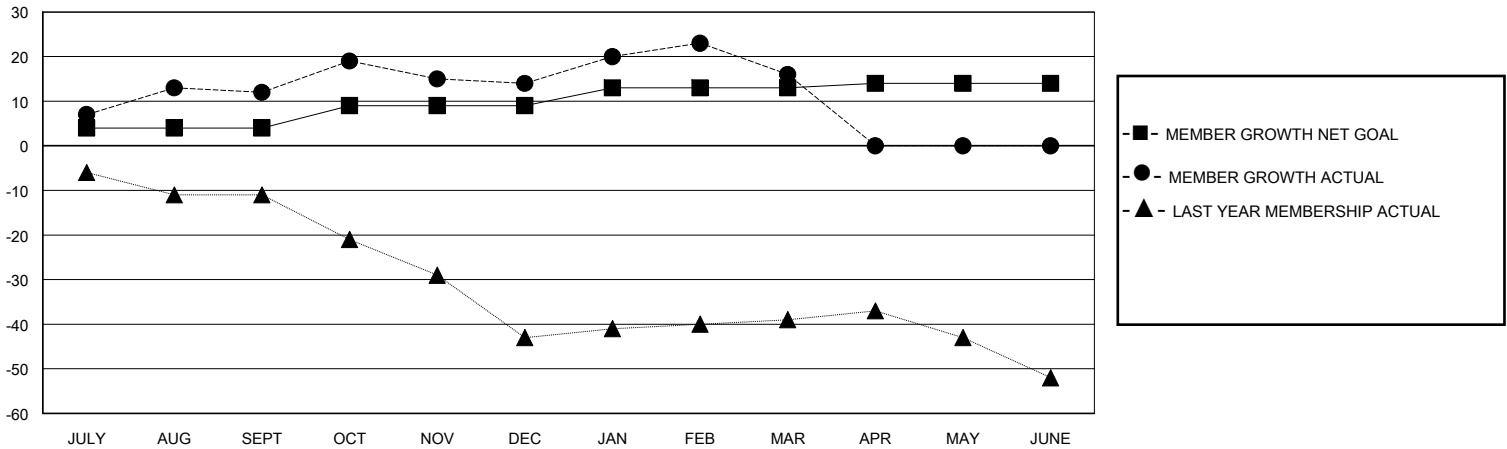
Clubs			
RESULTS FOR 2023-2024			
QUARTER	NEW CLUB GOAL	NEW CLUBS	DROPPED CLUBS
JULY/AUG/SEPT	0	0	0
OCT/NOV/DEC	0	0	0
JAN/FEB/MAR	0	0	0
APR/MAY/JUNE	1	0	0

Members			
RESULTS FOR 2023-2024			
QUARTER	MEMBER GROWTH NET GOAL	MEMBER GROWTH ACTUAL	DROPPED MEMBERS ACTUAL (including transfers)
JULY/AUG/SEPT	4	32	18
OCT/NOV/DEC	5	20	17
JAN/FEB/MAR	4	25	18
APR/MAY/JUNE	1	0	0

GOALS AND ACTUAL NEW CLUBS CUMULATIVE



GOALS AND ACTUAL MEMBERS CUMULATIVE



DROPPED CLUBS: 0	23 CLUBS OF 39 ADDED 1 OR MORE NEW MEMBERS	<b>GENDER DISTRIBUTION</b>
		MALE 1,001 (77.00%)
		FEMALE 299 (23.00%)
<b>DROPPED MEMBERS</b>	<a href="#">CLICK HERE FOR CUMULATIVE MEMBERSHIP DATA</a>	TOTAL FAMILY UNIT MEMBERS 217
DECEASED 11		FAMILY MEMBERS PAYING HALF DUES 111
CLUB CANCELLED 0		
OTHER 42		
<b>TOTAL 53</b>		